

KINETIX

OPERATOR EDITION

**Suited for crews of high speed vessels
who require real-time alerts of impact
exposure thresholds.**



OPERATOR EDITION COMPONENTS

Processing Unit Seat-mounted or standalone

Accelerometer Triaxial

Display Seat, crew, and/or hull performance

Configurable Warnings alert of impact exposure thresholds.



**SYSTEM
PROCESSING
UNIT
(SPU)**

+



**DECK
ACCELERATION
UNIT
(DAU)**

+



**VISUAL
ON-BOARD
DISPLAY**



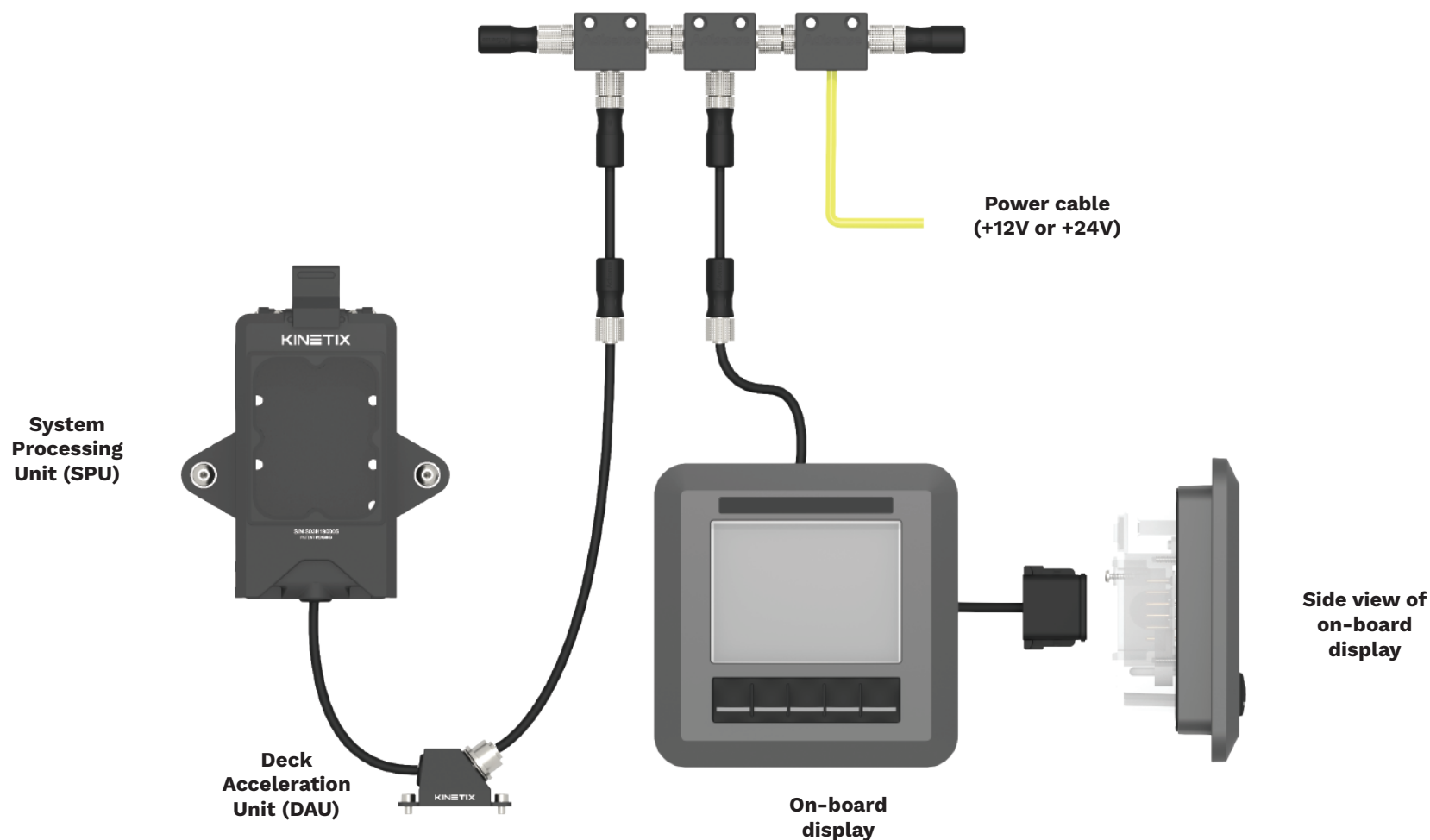
OPERATOR EDITION COMPONENTS

Processing Unit Seat-mounted or standalone

Accelerometer Triaxial

Display Seat, crew, and/or hull performance

Configurable Warnings alert of impact exposure thresholds.





SYSTEM PROCESSING UNIT (SPU)

The System Processing Unit (SPU) contains a triaxial accelerometer and functions as a signal processor.

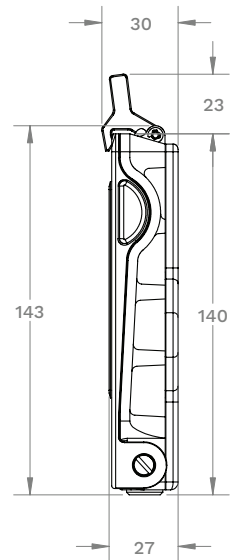
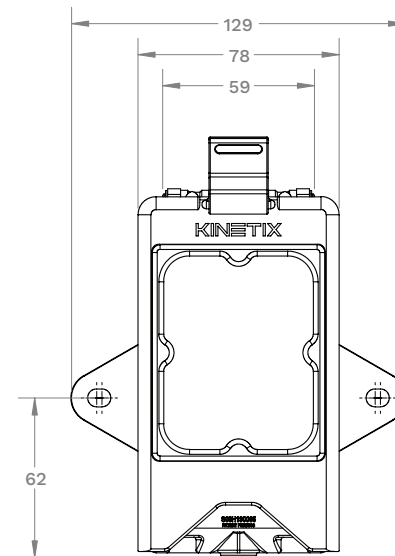
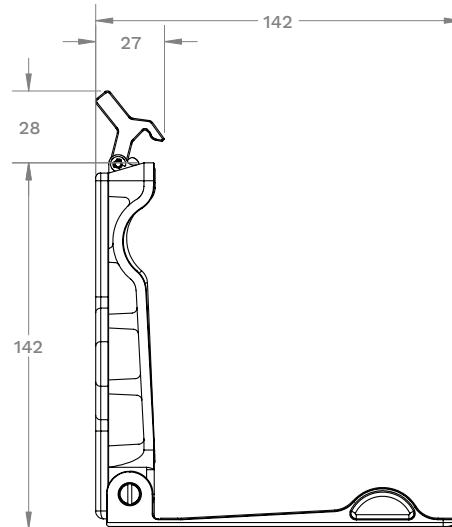
It is typically permanently mounted to a shock mitigating suspension seat.



KINETIX System Processing Unit (SPU)



Seat placement (for illustration only,
seat types may vary)





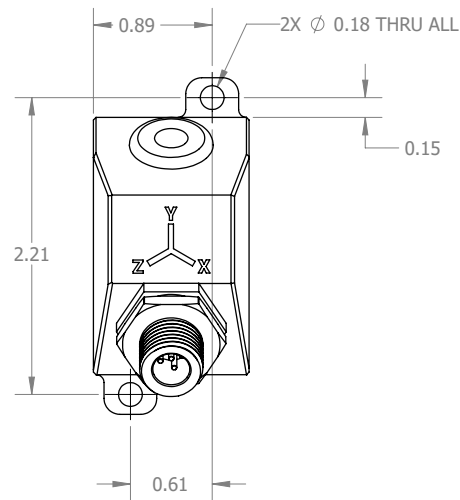
DECK ACCELERATION UNIT (DAU)

The Deck Acceleration Unit (DAU) measures triaxial accelerations acting on the vessel.

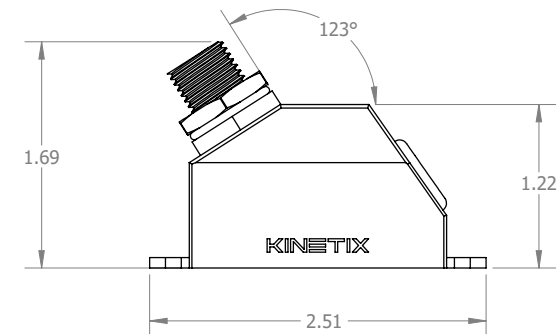
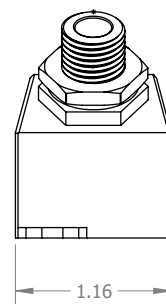
It is typically permanently or semi-permanently mounted to a fixed point on the vessel.



Deck Acceleration Unit (DAU)



Seat placement (for illustration only, seat types may vary)





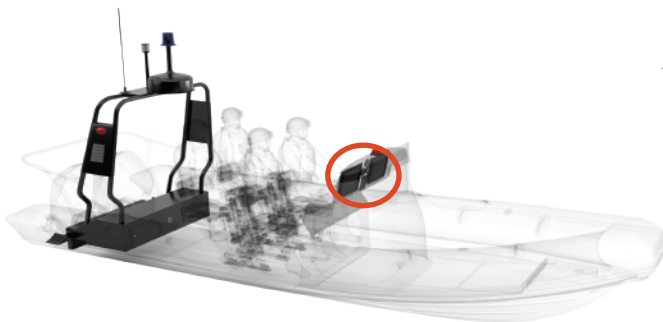
KINETIX DISPLAY

The KINETIX digital on-board dash display is an optional system component that alerts crew in real-time to hazardous impact conditions or seat bottom-out risk.

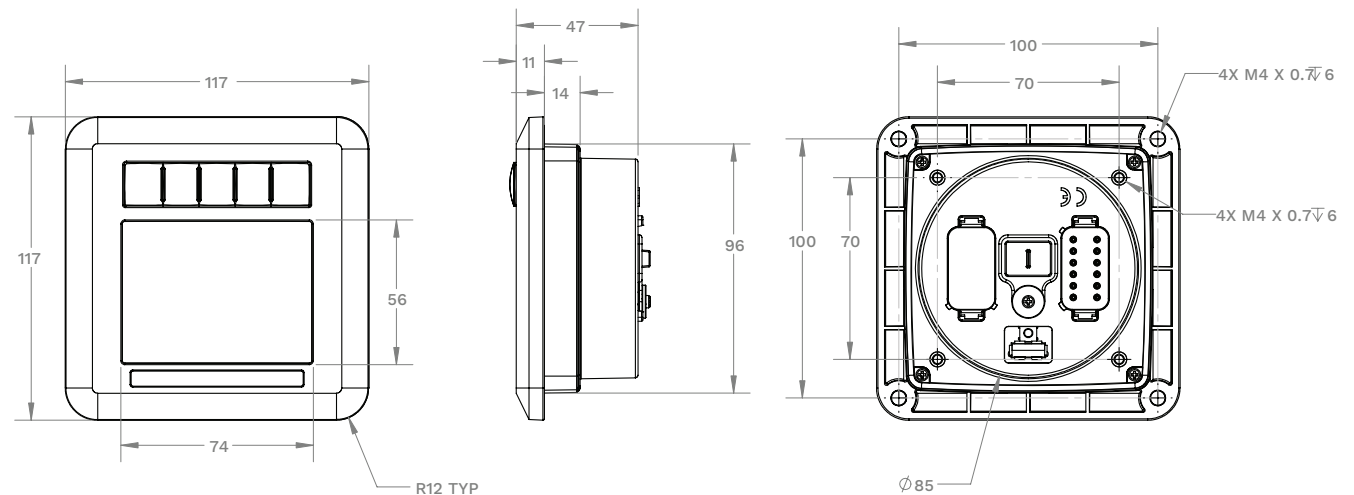
The display is IP-rated 67.



On-Board Display



Typical placement (for illustration only)





ADDITIONAL DISPLAY OPTIONS

*Both options require a Bluetooth-connected
Digital Log Book



The KINETIX application is available through the Raymarine LightHouse application store for the Axiom series. KINETIX also displays on most other Android-powered devices.



The KINETIX application can be displayed on a Smartwatch for individualized reporting and physical alerts (i.e. vibration or sound).



OPERATOR EDITION SPECIFICATIONS

Processing Unit Seat-mounted or standalone

Accelerometer Triaxial

Display Seat, crew, and/or hull performance

Configurable Warnings alert of impact exposure thresholds.

Acceleration

Tri-axial X, Y, Z with gyro

+/- 30 g range

1 mg resolution

Power

12-24 V power input