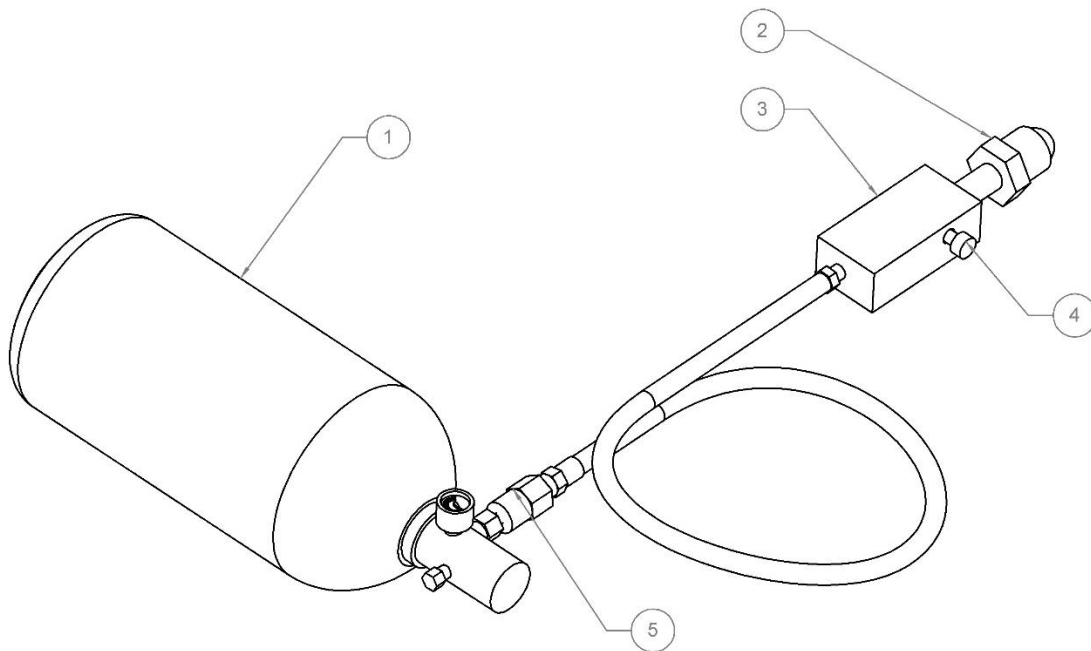


# SHOX5 Nitrogen Fill Kit Procedure

## Filling the Mini Bottle

1. Connect ADAPTOR (2) to nitrogen supply tank
2. Close PRESSURE RELIEF VALVE (4) by turning clockwise
3. Connect COUPLER (5) to MINI BOTTLE (1)
4. Open nitrogen supply tank valve to fill MINI BOTTLE (1)
5. Close nitrogen supply tank valve
6. Slowly open PRESSURE RELIEF VALVE (4)
7. Disconnect COUPLER (5) from MINI BOTTLE (1)
8. If filling additional Mini Bottles, repeat steps 2 to 7



## Attaching the Mini Bottle

1. Remove VALVE CAP (7) from MINI BOTTLE (1)
2. Close BOTTLE VALVE (6), turn black knob counterclockwise until stop
3. Screw in MINI BOTTLE (1) until snug

## Filling a Shock

1. Close SILVER KNOB (5)
2. Open BOTTLE VALVE (6), turn black knob clockwise until stop
3. Connect CHUCK (4) to schrader valve on isolator
4. GAUGE (3) shows isolator pressure
5. Slowly open SILVER KNOB (5) to fill isolator to specified pressure. Refer to "Recommended SHOXS PRO Isolator Service Pressure" in supplied SHOXS Operation & Service Manual
6. Close SILVER KNOB (5)
7. If isolator is over-pressurized, release excess pressure using PRESSURE RELEASE VALVE (2)
8. If filling additional shocks, repeat steps 3 to 7
9. To safely store or transport the fill kit, close BOTTLE VALVE (6), back off black knob until stop

