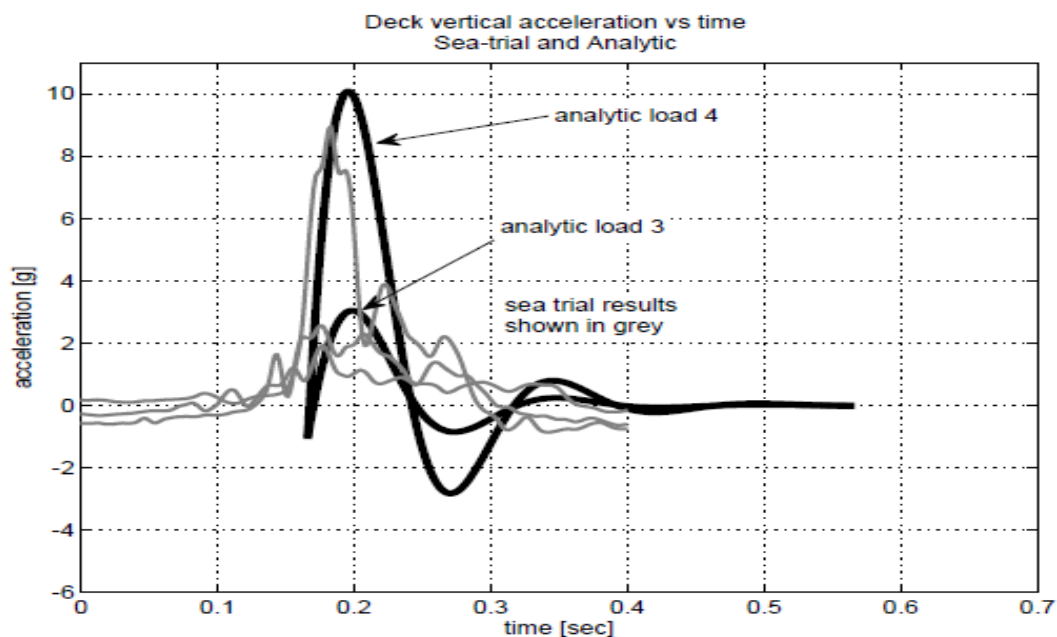


DROP TEST METHODOLOGY



- Use of a Drop Test Rig allowing up to 30" drops
- Matching drop test shocks with real sea-testing conditions and Matlab Simulink Models
- Range of Acceleration (4gs to 20gs)
- Half period of the shock (80ms to 150ms)
- Measuring and Recording
- Seat Acceleration
- Deck Acceleration
- Stroke used
- Shock velocity
- Rebound velocity
- Sag

